



Recombinant antibody to hGDF15, clone 7C7, hIgG1

| | |
|----------------------------------|---|
| Catalogue # | R1-220-100 |
| Immunogen: | Recombinant hGDF-15 protein |
| Immunogen Description: | Recombinant human GDF-15 protein produced by CHO-based Icosagen Cell factory Ltd. proprietary suspension cell line. |
| Alternative Names: | Growth differentiation factor 15, MIC-1, Macrophage inhibitory cytokine-1 |
| Uniprot ID: | Q99988 |
| Clonality: | Human monoclonal |
| Clone: | 7C7 |
| Class: | hIgG1 |
| Reactivity: | Binds to human GDF-15 protein. |
| Dissociation constant (K_D): | Summary of antibody screening to soluble recombinant GDF-15 using an Octet system. KD, M: 2,31E-09 |
| Application: | ELISA |
| Protocol: | Monoclonal antibody working amount has to be established practically for each particular antigen and assay format. |
| Purification: | Protein A affinity chromatography followed by gel filtration. |
| Purity: | >90% |
| Concentration: | 1 mg/ml |
| Buffer: | PBS pH 7.4 |
| QC: | Simply Blue Safe stained SDS-PAGE, analytical HPLC-SEC, Octet binding. |
| Related Products: | No established recommended antibody pairing for this clone. |
| Shipping: | Shipped on dry ice. |

Storage: Store in -65...-85 °C. Avoid multiple freeze-thaw cycles.

Background: Growth differentiation factor 15 (GDF-15) is a cytokine that belongs to the transforming growth factor beta (TGF-?) superfamily. It is expressed in various tissues throughout the body, including the liver, placenta, and heart, and plays a pivotal role in regulating cell growth, differentiation, and survival. Elevated levels of GDF-15 have been associated with a variety of disease states, including cancer, cardiovascular disease and chronic kidney disease. In cardiovascular disease, increased levels of GDF-15 have been linked to an elevated risk of adverse outcomes, including heart failure, atherosclerosis, acute myocardial infarction and acute coronary syndrome.

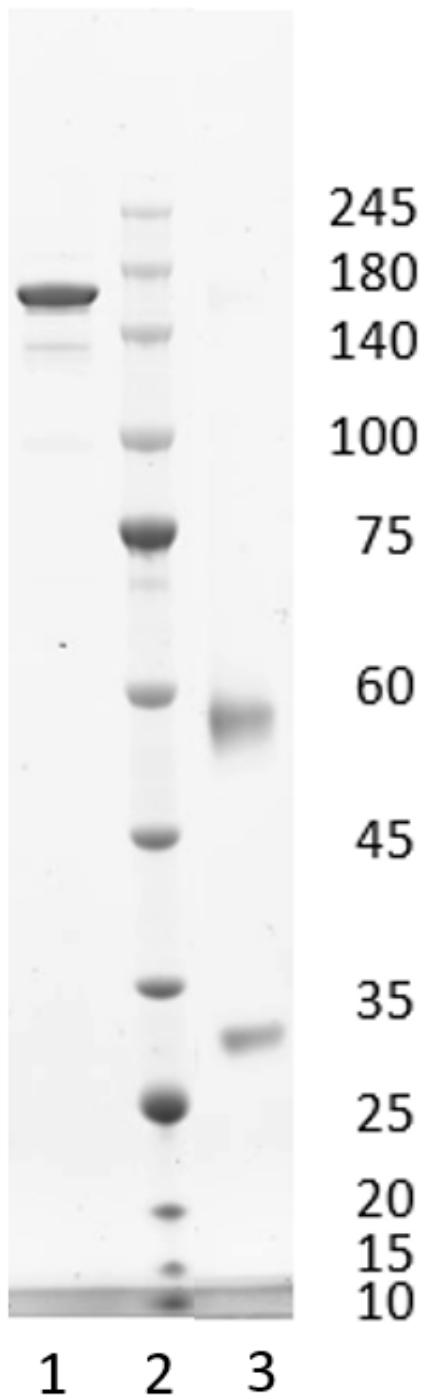


Figure 1. Simply Blue Safe stained SDS-PAGE analysis of recombinant antibody to hGDF15, clone 7C7. 4-12% gel is used for analysis. Lane 1. Recombinant antibody to hGDF15, clone 7C7 (-DTT) Lane 2. Size marker Lane 3. Recombinant antibody to hGDF15, clone 7C7 (+DTT)

Peak Table

| RT | Area | Area % |
|-------|--------|--------|
| 8.754 | 2755.2 | 100.00 |

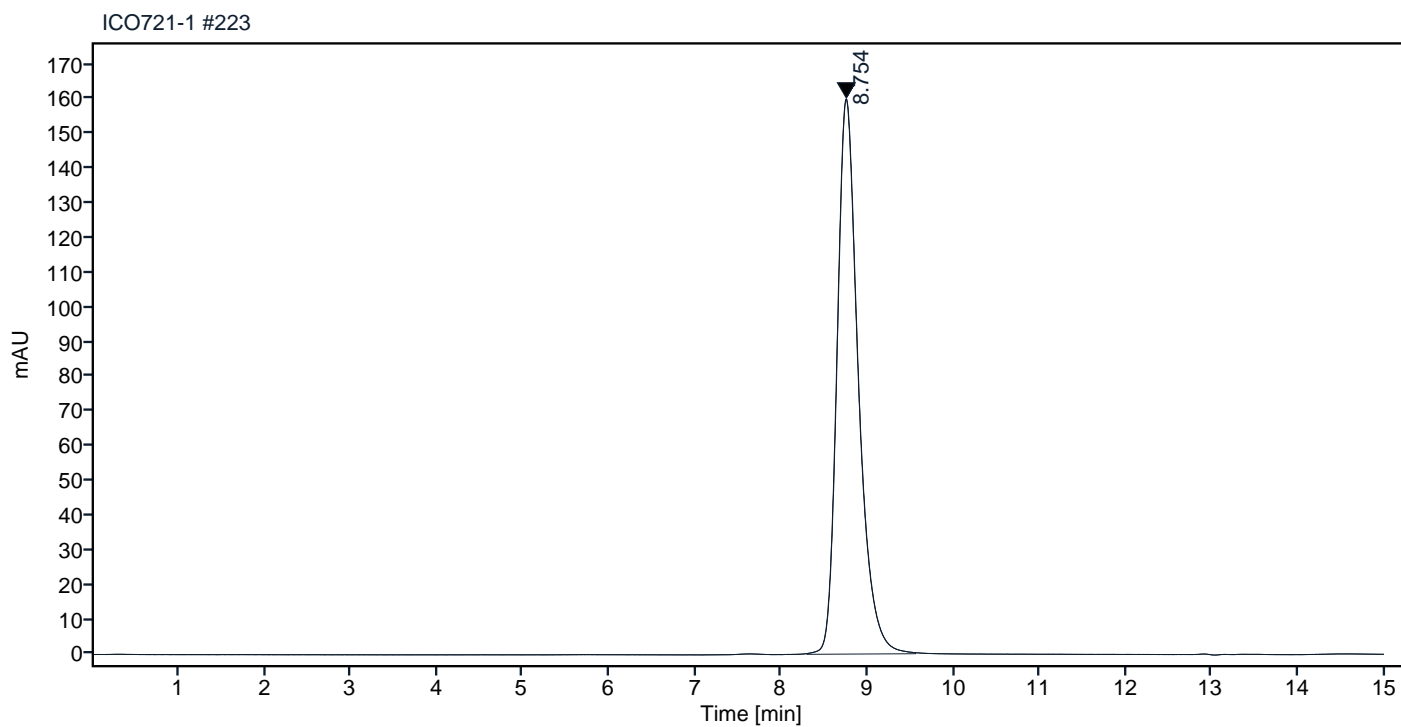


Figure 2. HPLC analytical SEC for final product.

Peak Table

| RT | Area | Area % |
|-------|--------|--------|
| 8.753 | 2445.5 | 100.00 |

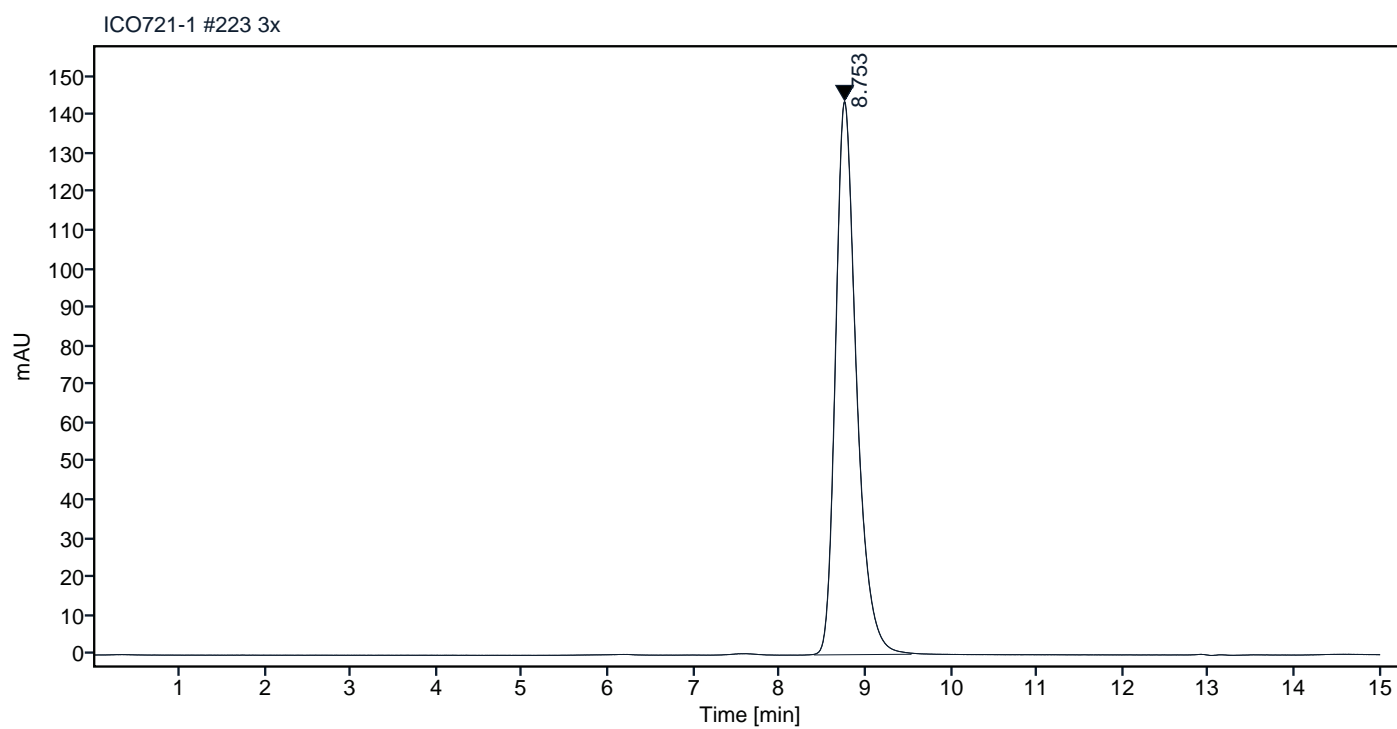


Figure 3. HPLC analytical SEC after 3 freeze-thaw cycles.

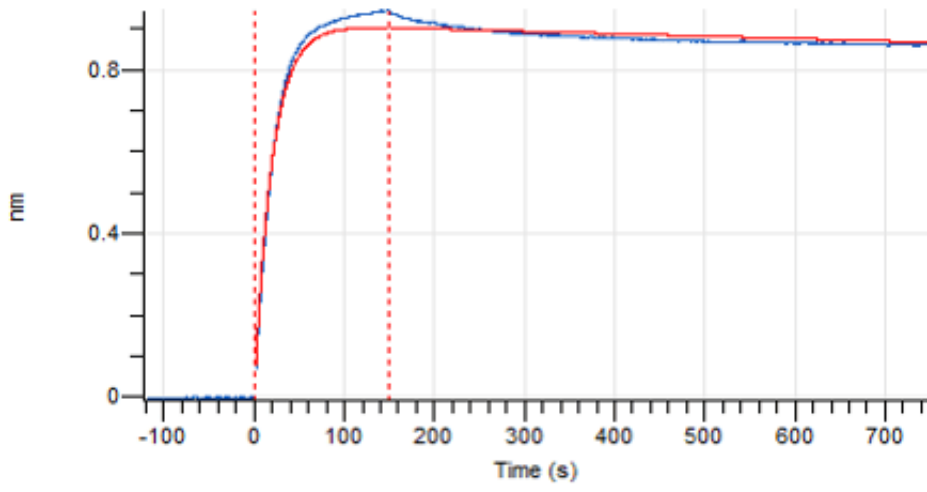


Figure 4. Octet BLI analysis, antibody was loaded on sensor for capture of hGDF-15 protein.