



Monoclonal antibody to RBP4, clone 6C2, hIgG1

Catalogue #	R1-649-100
Immunogen:	Recombinant RBP4-His protein
Immunogen Description:	Recombinant RBP4 protein produced by CHO-based Icosagen Cell factory Ltd. proprietary suspension cell line.
Alternative Names:	Retinol binding protein 4, plasma retinol-binding protein, PRBP
Uniprot ID:	P02753
Source:	Human
Clonality:	Human monoclonal
Clone:	6C2
Class:	hIgG1
Reactivity:	Binds to RBP4 protein
Dissociation constant (K_D):	Summary of antibody screening to soluble RBP4 using an Octet system. KD, M: 7,6E-10
Application:	ELISA, CLIA
Protocol:	Monoclonal antibody working amount has to be established practically for each particular antigen and assay format.
Purification:	Protein A affinity chromatography followed by gel filtration
Purity:	>90%
Concentration:	1 mg/ml
Buffer:	PBS pH 7.4
QC:	Simply Blue Safe stained SDS-PAGE, analytical HPLC-SEC, Octet binding.
Related Products:	RBP4 antibody clone 6C2 has been identified as a recommended capture antibody with clone

14D5 (cat# R1-653-100). In our in-house testing, the pair recognized native RBP4 purified from human plasma both as a free form and in a complex with prealbumin.

Shipping: Shipped on dry ice.

Storage: Store at -20 °C to -70 °C. Avoid multiple freeze-thaw cycles.

Background: Retinol binding protein 4 (RBP4) is a plasma retinol (Vitamin A) transporter that carries retinol from the liver to the periphery. Changes in RBP4 levels are connected to a wide range of metabolic diseases, including obesity, insulin resistance (IR), metabolic syndrome, type 2 diabetes (T2D), non-alcoholic steatohepatitis (NASH), non-alcoholic fatty liver (NAFL), cardiovascular diseases, and others.

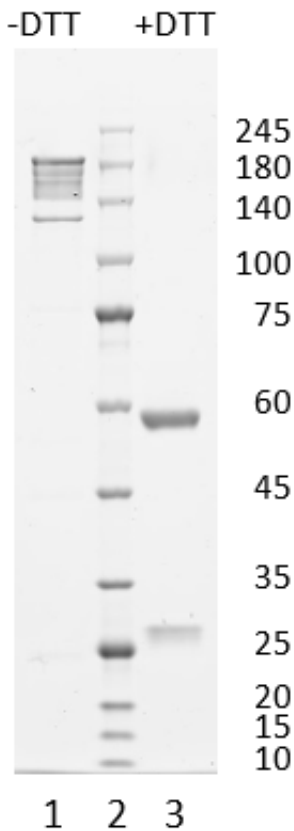


Figure 1. Simply Blue Safe stained SDS-PAGE analysis of monoclonal antibody to RBP4, clone 6C2. 4-12% gel is used for analysis. Lane 1. Monoclonal antibody to RBP4, clone 6C2 (-DTT) Lane 2. Size marker Lane 3. Monoclonal antibody to RBP4, clone 6C2 (+DTT)

Peak Table

RT	Area	Area %
8.881	2736.3	100.00

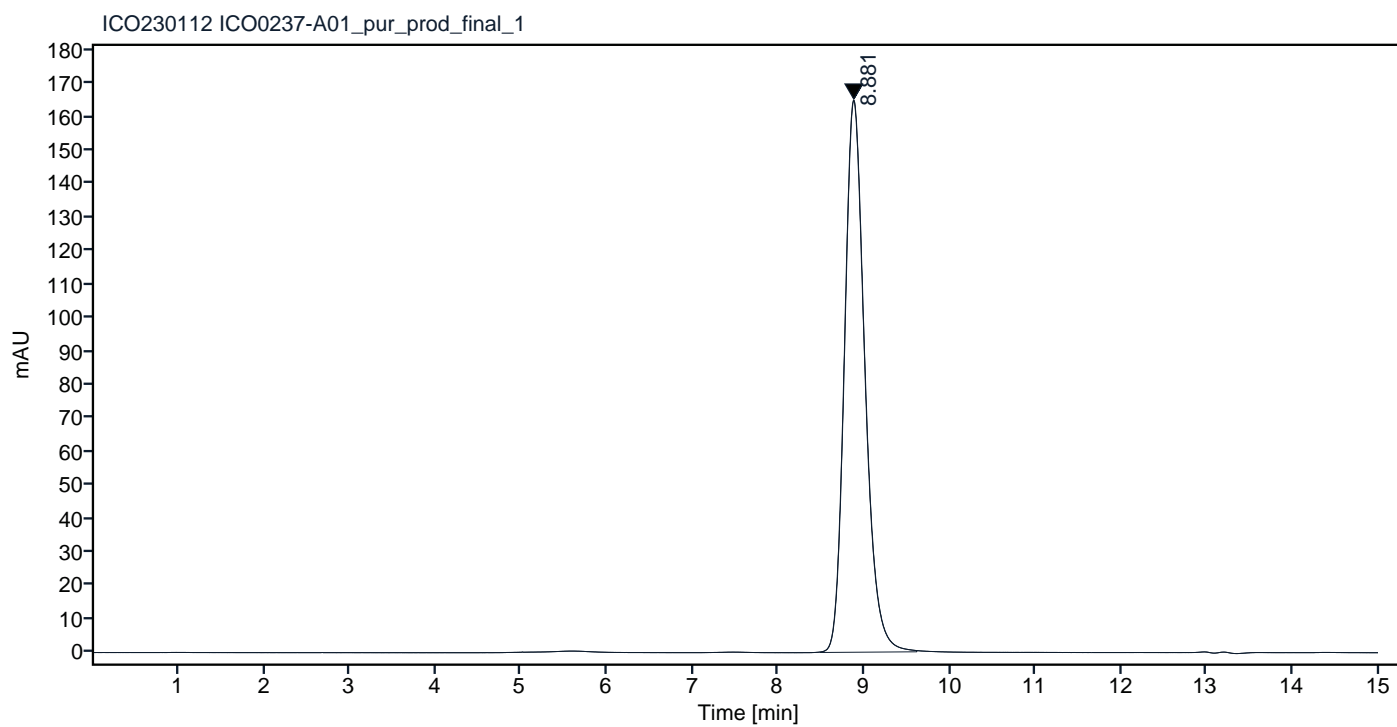


Figure 2. HPLC analytical SEC for final product.

Peak Table

RT	Area	Area %
8.881	2690.2	100.00

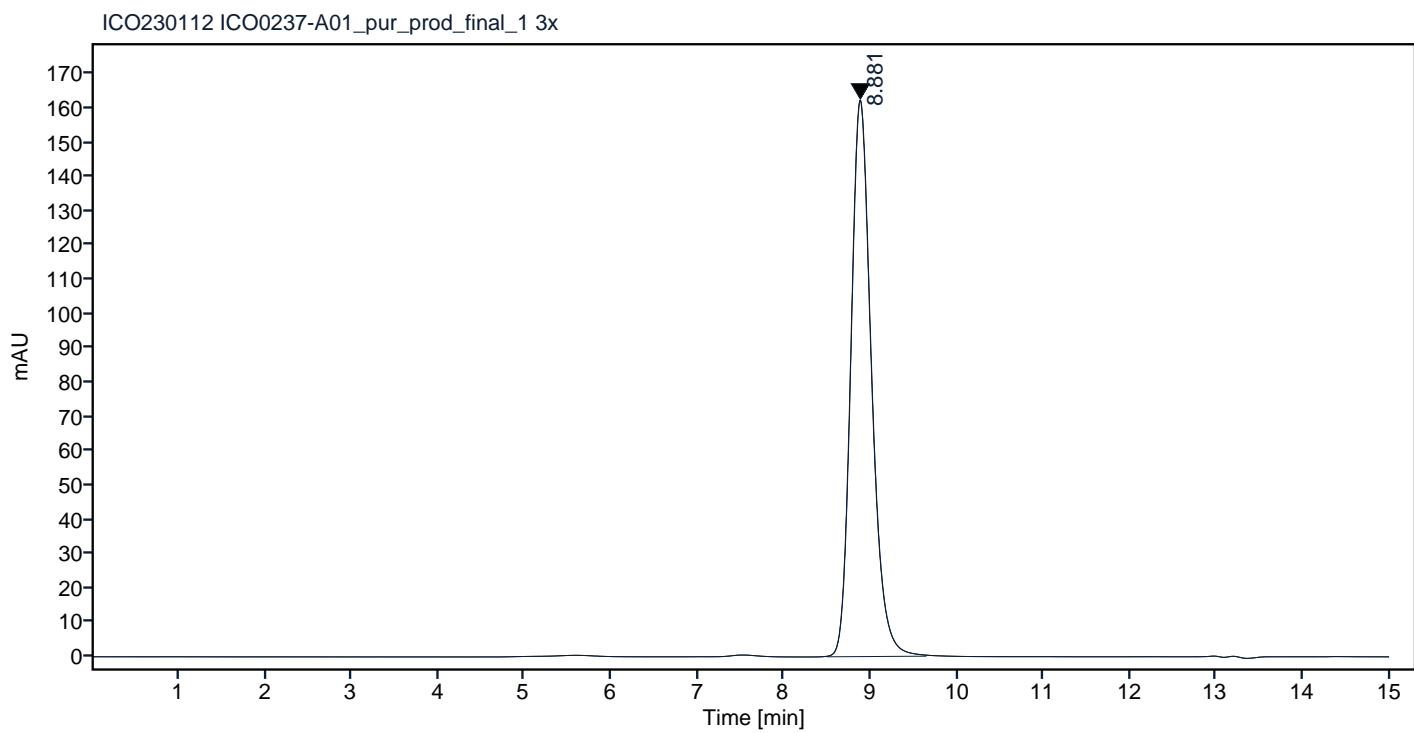


Figure 3. HPLC analytical SEC for final product.

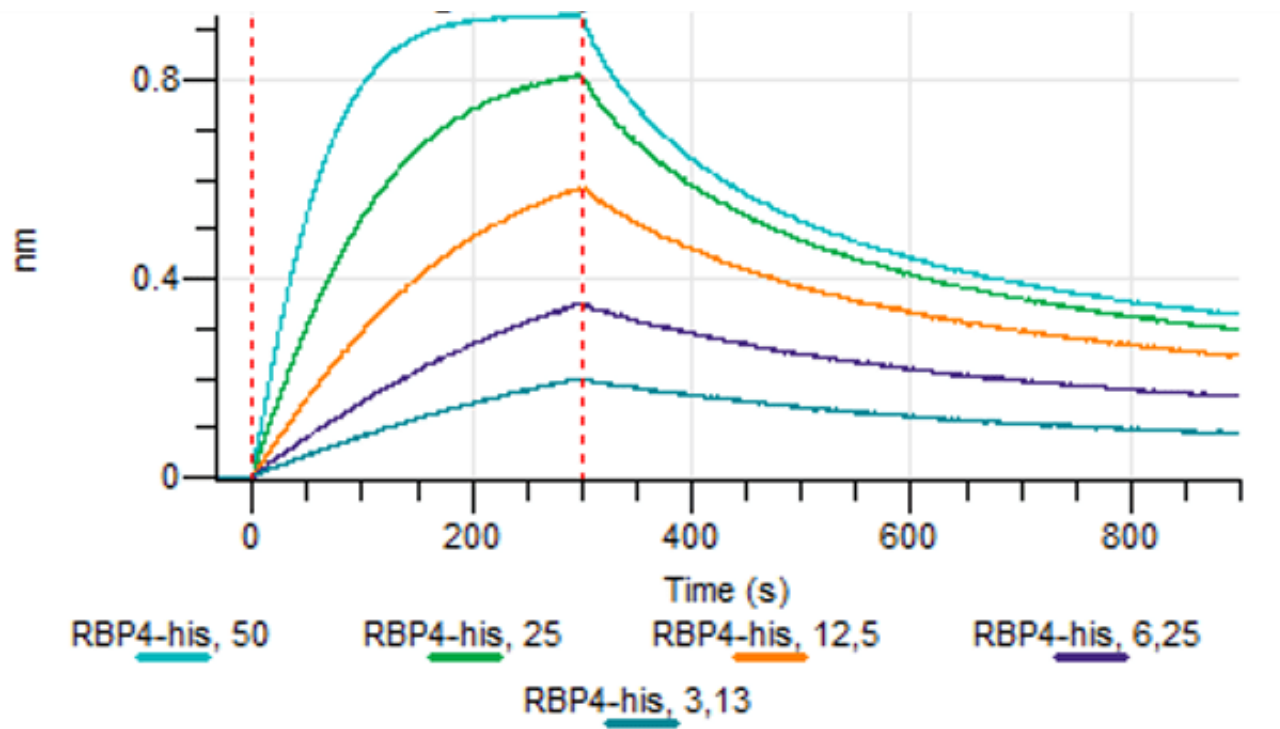


Figure 4. Octet RED96e analysis, antibody was loaded on sensor for capture of RBP4-His protein in different concentrations.