

Mouse mAb to BPV type 1 E2 protein (clone 1E2)

Catalogue #	A1-150-100
Immunogen:	BPV type 1 E2
Immunogen Description:	Recombinant full length BPV type I E2 protein produced in <i>E. coli</i>
Alternative Names:	Regulatory protein E2, bovine papillomavirus type 1 E2
Uniprot ID:	P03122
Clonality:	Mouse monoclonal
Clone:	1E2
Class:	IgG
Reactivity:	Bovine, BPV type 1 E2 protein, mapped to amino acids 182-190 (TTGHYSVRD)
Application:	ELISA, WB, IF
Protocol:	Monoclonal antibody working amount has to be established practically for each particular antigen and assay format.
ELISA:	0.2 - 1 µg/ml
IF:	0.33 - 1 µg/ml
Purification:	Protein A affinity chromatography followed by gel filtration and desalting.
Buffer:	PBS pH 7.4, 50% glycerol
QC:	SDS-page, analytical HPLC-SEC
Related Products:	Monoclonal antibodies to BPV type 1 E2 protein. For more information and ordering see full list: shop.icosagen.com/products/?antibodies
Shipping:	Shipping in ambient conditions.
Storage:	Store at -20 °C to -70 °C. Avoid multiple freeze-thaw cycles.

Background: E2 protein plays a central role in the viral life cycle as it regulates both transcription and replication of the viral genome. Can either activate or repress transcription. The E1-E2 protein complex binds to the origin of DNA replication activating replication of the BPV.

References **Kurg R, Parik J, Juronen E, Sedman T, Abroi A, Liiv I, Langel Ü, and Ustav M.** 1999. Effect of bovine papillomavirus E2 protein-specific monoclonal antibodies on papillomavirus DNA replication, *J Virol.* 73: 4670-77.

Kurg R, Tekkel H, Abroi A, and Ustav M. 2006. Characterization of the functional activities of the bovine papillomavirus type 1 E2 protein single-chain heterodimers, *J Virol.* 80(22): 11218-25

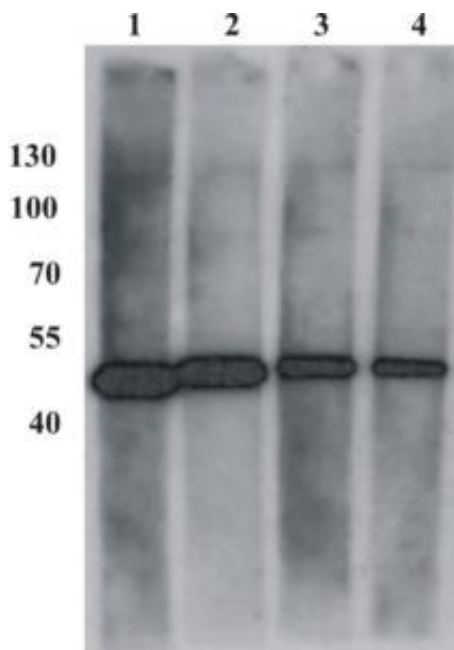
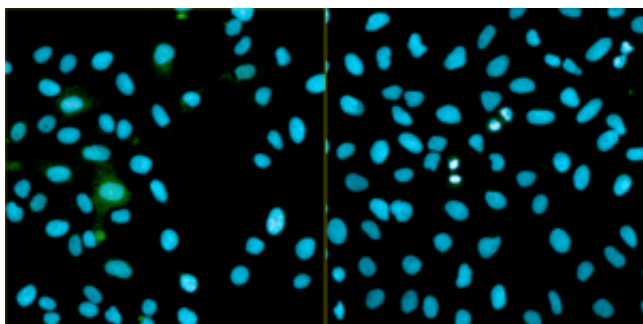


Figure 1. Western Blot testing of anti-BPV E2 monoclonal antibody (1E2). Testing BPV E2 protein-expressing Cos7 cell lysate. Different antibody dilutions were used for testing. Lane 1:500; Lane 2. 1:1000; Lane 3. 1:4000; Lane 4. 1:6000

A.



B.

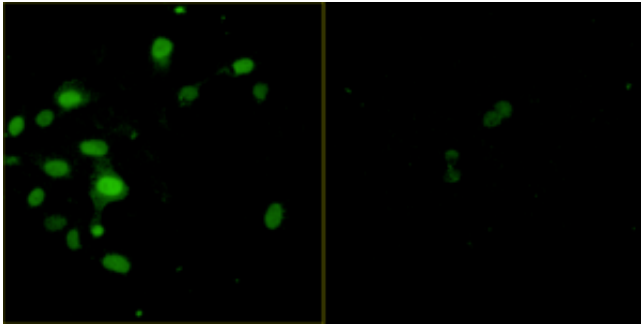


Figure 2. Immunofluorescence testing of anti-BPV E2 monoclonal antibody (1E2). Assay was carried out with U2OS cells expressing BPV E2 protein. Antibody concentration of 0.33 $\mu\text{g/ml}$ was used. Nuclei were stained by DAPI. Fluorescence was measured at (A) 460 nm and 488 nm wavelengths or (B) 488 nm only.