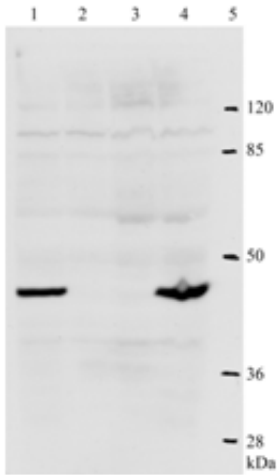


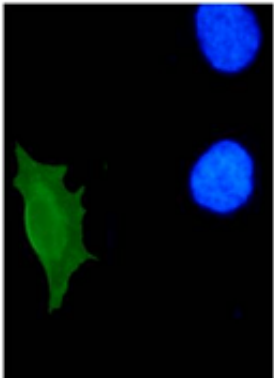
## Mouse monoclonal antibody to HPV18 E2 (clone 2E7)

Catalogue #	A2-401-100
Immunogen:	HPV-18 E2
Immunogen Description:	Recombinant full-length HPV-18 E2-protein produced in <i>E. coli</i>
Alternative Names:	HPV18 E2, human Papilloma Virus type 18 Protein E2
Clonality:	Mouse monoclonal
Clone:	2E7
Class:	IgG
Reactivity:	Reacts with HPV-18 E2-protein. Mapped to amino acids 1-83
Application:	ELISA, WB, IF
Protocol:	<b>This antibody does not work in IP.</b>  Monoclonal antibody working titer has to be established practically for each particular antigen and assay format.
ELISA:	0,1 µg/ml
IF:	0.33 - 20 µg/ml
IP:	This antibody does not work in IP
Purification:	Protein G affinity chromatography
Buffer:	PBS pH 7.4, with 0.1% sodium azide
Shipping:	Shipping in ambient conditions.
Storage:	Store at -20 °C to -70 °C. Avoid multiple freeze-thaw cycles.
Background:	Human papillomaviruses (HPV) are small DNA viruses which infect epithelia of the skin and mucosa. Over 90 types have been identified and they mostly cause a variety of benign lesions such as warts and verrucae. However, some

subtypes, notably types 16 and 18, 31 and 33, have been confirmed as agents which cause cervical cancer. Human Papillomavirus (HPV) E7 proteins have cellular transforming and trans-activating activities



**Figure 1. Western-Blot analysis of HPV-18 E2 protein.** WB was carried out with 2E7 Mab using the lysates of U2OS and Hela cells. Lanes 1 and 4: respective cells transfected with plasmid expressing HPV-18 E2 protein. Lanes 2 and 3: non-transfected U2OS and Hela cells, respectively. Lane 5: marker.



**Figure 2. IF analysis of HPV-18 E2 protein in U2OS cells.** IF was carried out with Hela cells transfected with plasmid expressing HPV-18 E2 protein. All the nuclei were stained by DAPI. Green color represents nucleus-localized HPV-18 E2 detected by Mab 2E7