

Mouse monoclonal antibody to MLV p30 (clone 4B2)

Catalogue #	A2-301-100
Immunogen:	MLV p30
Immunogen Description:	Full length recombinant MLV-Gag p30 capsid protein, produced in <i>E. coli</i>
Alternative Names:	Murine Leukemia Virus p30 protein, Murine Leukemia Virus Capsid Protein
Clonality:	Mouse monoclonal
Clone:	4B2
Class:	mIgG1
Reactivity:	MLV Gag, p30
Application:	ELISA, WB
Protocol:	Monoclonal antibody working titer has to be established practically for each particular antigen and assay format
ELISA:	0,05-0,1 µg/ml
Purification:	Protein G affinity chromatography
Buffer:	PBS pH 7.4, 0.1% sodium azide
Shipping:	Shipping in ambient conditions.
Storage:	Store at -20 °C to -70 °C. Avoid multiple freeze-thaw cycles.
Background:	Murine leukemia viruses belong to family of Retroviruses group and are named for their ability to cause cancer in mice. Some form of MLV's are used in cancer research. The retroviral Gag protein plays important roles at several stages in the viral life cycle. Late in infection, the Gag precursor protein acts to mediate the assembly and release of virion particles. After budding, the core matures by cleavage of Gag precursor protein into the mature core proteins, the matrix (MA), capsid (CA) and nucleocapsid proteins. These separated Gag proteins then play roles in

the early stages of infection

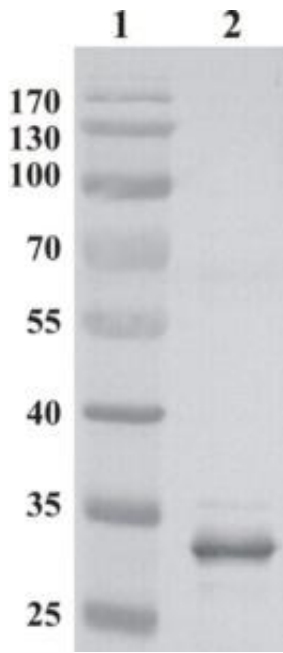


Figure 1. Western Blot testing of MLV-gag antibody, clone 4B2. Line 1. PageRuler Prestained Protein Ladder (#SM0671, lot: 00052778, Fermentas); Line 2. MLV-gag p30 recombinant protein expressed in E.coli