

Chicken pAb to human RET

Catalogue #	306-100
Immunogen:	human RET
Immunogen Description:	Recombinant His-tagged extracellular fragment of human RET protein produced using CHO-based Icosagen Cell factory Ltd. proprietary suspension cell line. The extracellular fragment of hRET was expressed and secreted to the cell culture supernatant. Protein was purified by Ni-affinity chromatography following gel-filtration from cell culture supernatant
Alternative Names:	Proto-oncogene tyrosine-protein kinase receptor Ret, Cadherin family member 12, proto-oncogene c-Ret, CDHF12, CDHR16, PTC
Uniprot ID:	P07949
Clonality:	Polyclonal
Class:	IgY
Reactivity:	Human RET
Application:	ELISA, WB, IF
Protocol:	Polyclonal antibody working titer has to be established practically for each particular antigen and assay format
ELISA:	8-12,5 ng/ml
IF:	2-4 µg/ml
Purification:	RET affinity chromatography
Buffer:	50% saturated ammonium sulfate in PBS
Shipping:	Shipping in ambient conditions.
Storage:	Store at +2 °C to +8 °C. As product is (NH ₄) ₂ SO ₄ precipitate, mix well by pipetting or vortexing prior use
Background:	The RET proto-oncogene is a receptor tyrosine kinase for members of the glial cell line-derived

neurotrophic factor family of extracellular
signalling molecules

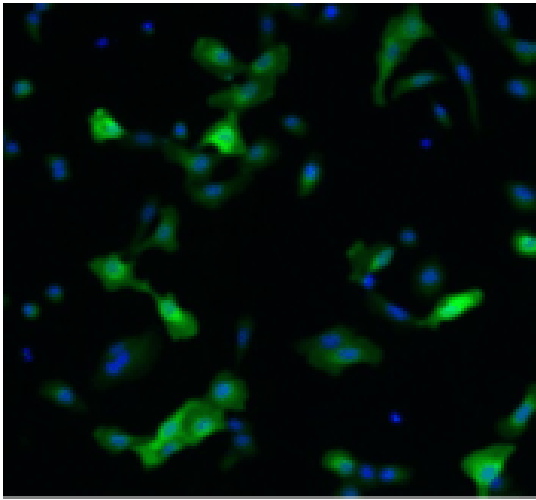


Figure 1. Immunofluorescence detection of human RET expressed in U2OS cells. RET was visualized using Chicken polyclonal antibody to human RET (dilution 1:500) and Goat anti-chicken IgY – H&L DyLight 550 (Abcam, ab96952) (dilution 1:200) as secondary antibody. For nuclear staining DAPI was used. ArrayScan VTI platform (Thermo Scientific) was used for image acquisition (10x objective). Composite picture was generated using pseudocolors green for RET specific signal and blue for nuclei

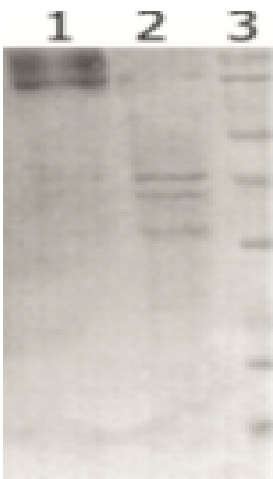


Figure 2. Western-Blot detection of human RET expressed in CHO cells. **Line 1.** hRET-containing CHOEBNALT85 cell culture supernatant. **Line 2.** Negative control – CHOEBNALT85 cell culture supernatant. 5 μ l of supernatant were loaded per line. Primary antibody dilution 1:5000 was used. Rb pAb to Chk IgY ab6753, was used as secondary antibody.