



Human IgG1-kappa antibody to SARS CoV-2 S1 RBD (clone 38G5)

Catalogue #	R1-159-100
Immunogen:	SARS-CoV-2 virus
Immunogen Description:	SARS-CoV-2 virus (PBMCs isolated from patients recovered from SARS-CoV-2 infection, antibodies discovered by using HybriFree Technology).
Alternative Names:	Spike glycoprotein, S glycoprotein
Uniprot ID:	P0DTC2
Clonality:	Human monoclonal
Clone:	38G5
Class:	hIgG1
Reactivity:	SARS-CoV-2 Spike S1 RBD, also recognized SARS CoV-2 Trimeric Spike in Octet analysis.
Application:	ELISA
Protocol:	Monoclonal antibody working amount has to be established practically for each particular antigen and assay format.
Purification:	Protein A affinity chromatography followed by desalting
Concentration:	1 mg/ml
Buffer:	PBS pH 7.4
Shipping:	Shipped on dry ice.
Storage:	Store in -65...-85 °C. Avoid multiple freeze-thaw cycles.

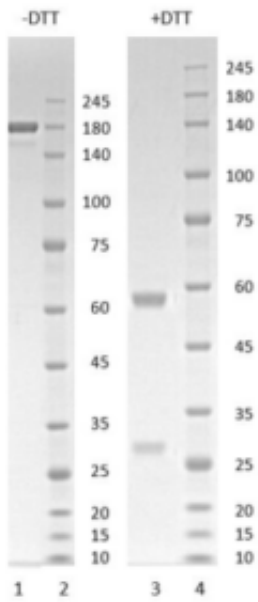


Figure 1. Coomassie-stained SDS-PAGE analysis of monoclonal antibody to SARS-CoV-2 Spike RBD, clone 38G5. 4-12% gradient gel is used for analysis. Lane 1. Monoclonal antibody to SARS-CoV-2 Spike RBD, clone 38G5 (-DTT). Lane 2. Size Marker. Lane 3. Monoclonal antibody to SARS-CoV-2 Spike RBD, clone 38G5 (+DTT). Lane 4. Size Marker.

Peak Table

Peak #	RT (min)	Area	Area %
1	7.494	2356.85	100.00

Chromatogram

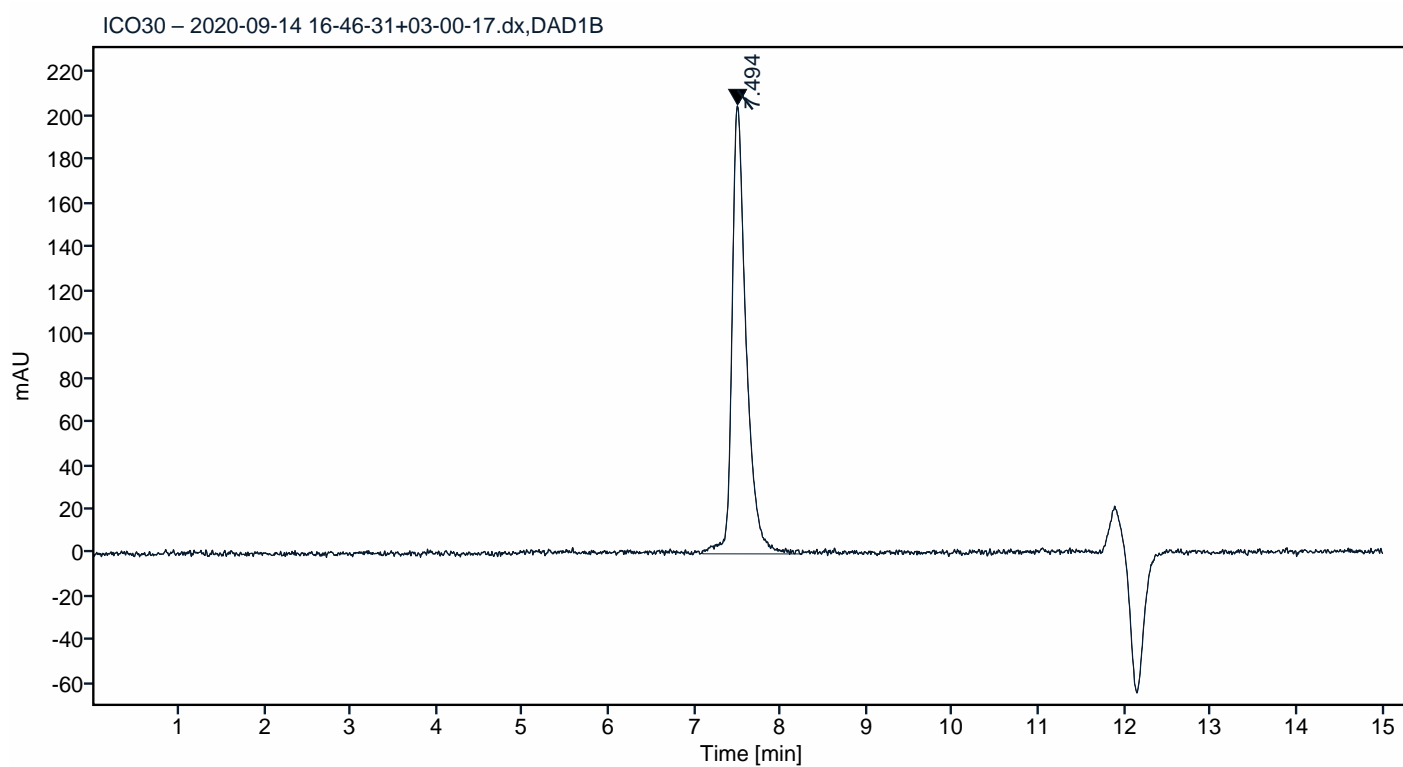


Figure 2. HPLC analytical SEC for final product.

Peak Table

Peak #	RT (min)	Area	Area %
1	7.490	1605.93	100.00

Chromatogram

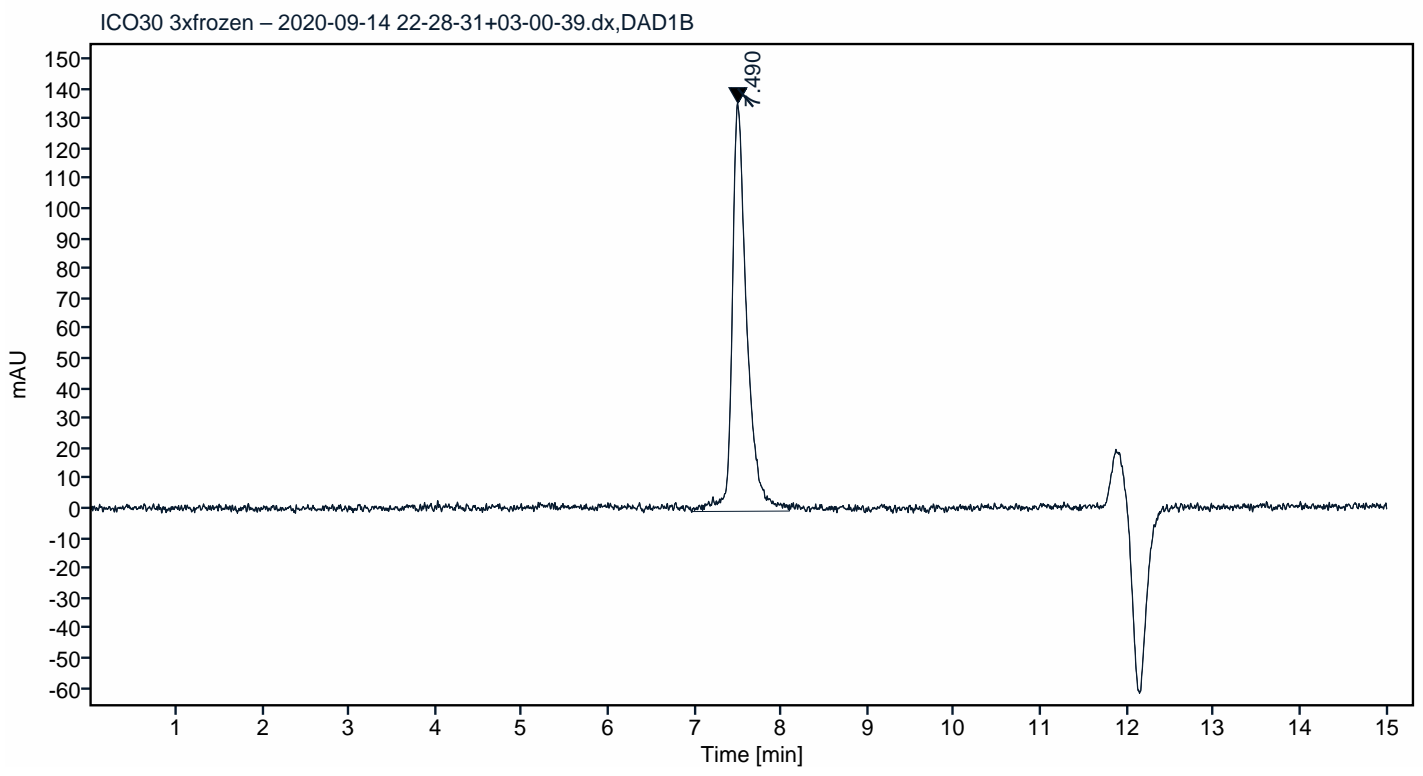


Figure 3. HPLC analytical SEC after 3 freeze-thaw cycles.

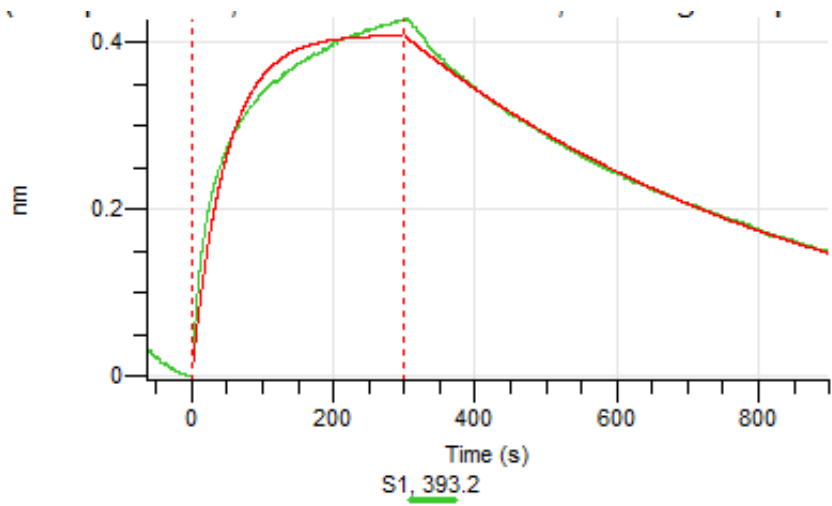


Figure 4. Octet RED96e analysis, antibody was loaded on sensor for capture of Spike S1 protein.