

SARS-Cov-2 Spike S2, CHO

Catalogue #	P-306-100
Description:	Protein contains amino acids 693-1218, two extra amino acids (AS) and His-6 tag at C-terminus.
MW:	58.6 kDa
Host:	CHO-based cell line (expressed by QMCF Technology)
Purification:	Metal-affinity chromatography followed by gel filtration. Protein is sterile-filtrated through 0.22 μ m filter.
Purity:	>90%
Concentration:	1 mg/ml
Buffer:	PBS pH 7.4
Endotoxine:	NA
QC:	SDS-PAGE NanoDrop A280, analytical SEC
Shipping:	Shipped on dry ice
Storage:	Store at -70°C upon receipt. It is strongly recommended to avoid repeated freeze-thaw cycles. Aliquot the protein, freeze quickly in liquid nitrogen and thaw only once for your experiments.
Custom price	Custom quantity - ask quotation

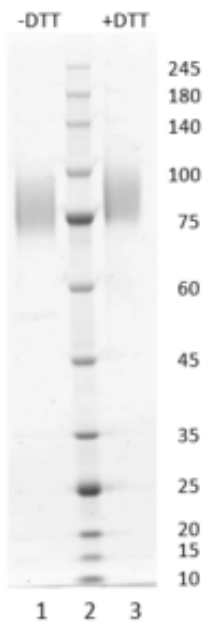


Figure 1. Coomassie-stained SDS-PAGE analysis of SARS-CoV-2 Spike S2. 4-15% gradient gel is used for analysis. Lane 1. SARS-CoV-2 Spike S2 (-DTT). Lane 2. Protein marker (Smobio). Lane 3. SARS-CoV-2 Spike S2 (+DTT).

Peak Table

Peak #	RT (min)	Area	Area %
1	6.260	12.99	0.33
2	8.679	3792.34	97.74
3	10.273	74.80	1.93

Chromatogram

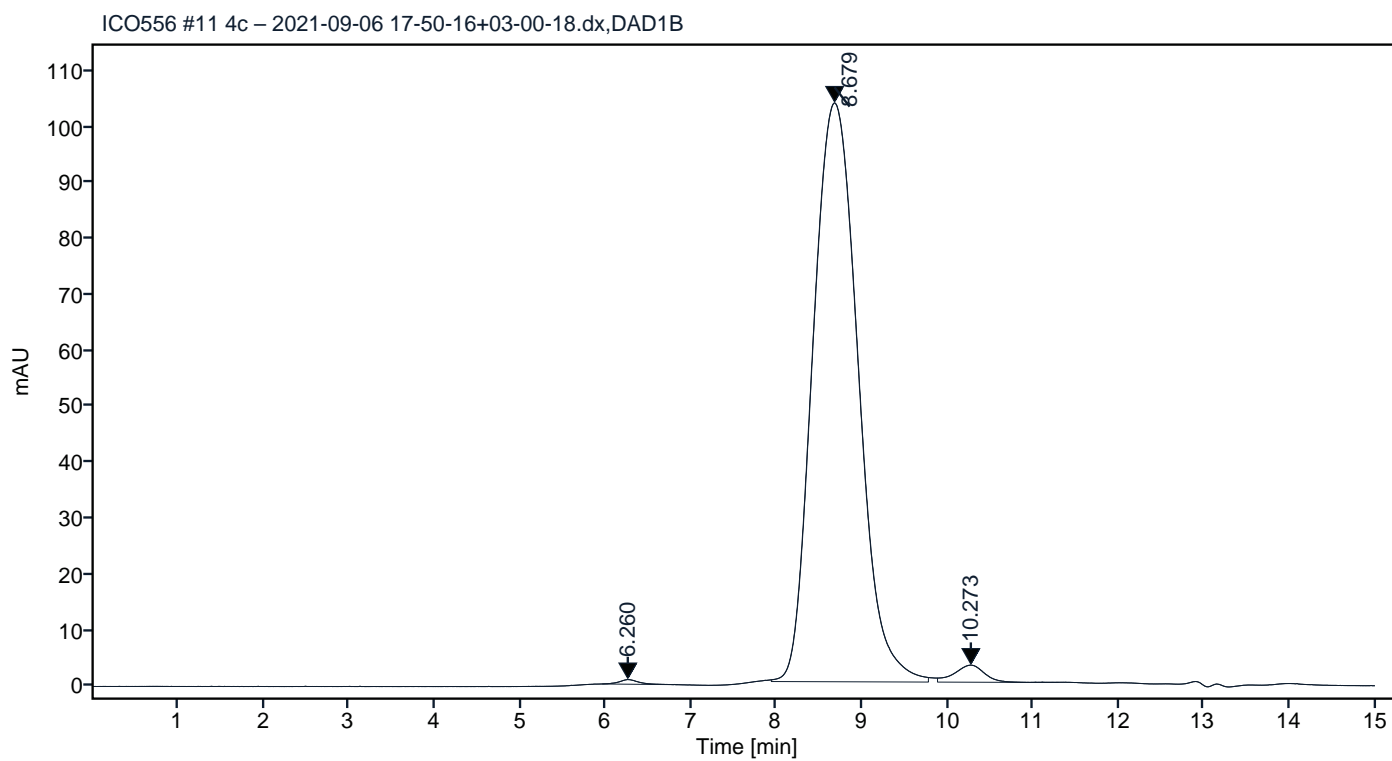


Figure 2. HPLC analytical SEC for final product.

Peak Table

Peak #	RT (min)	Area	Area %
1	6.251	126.39	3.98
2	8.662	2982.73	93.82
3	10.272	70.10	2.20

Chromatogram

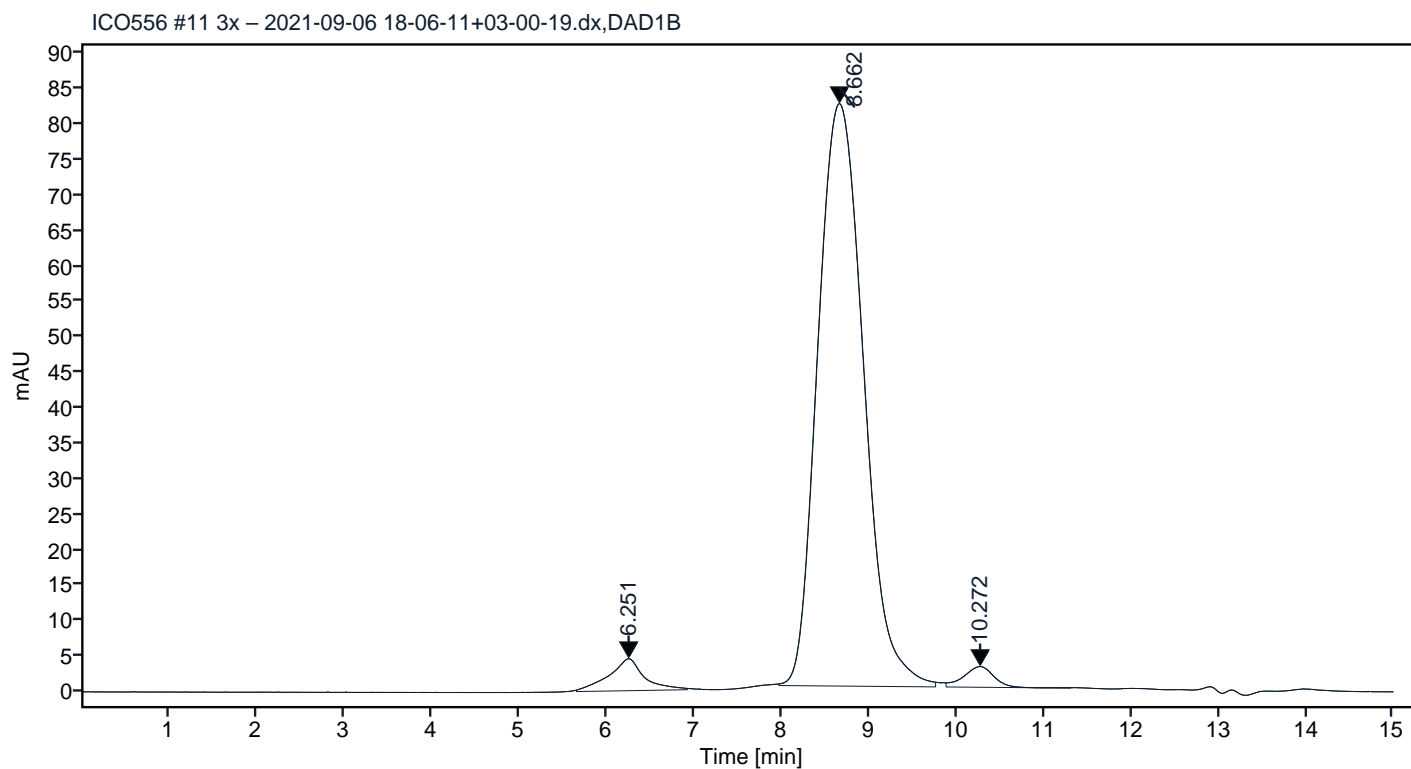


Figure 3. HPLC analytical SEC after 3 freeze-thaw cycles.